

## Raynet One Data Hub 2025.4

### 2025.4.7089.237 [RTM]

Released on Dec 19, 2025

#### **Native OpenShift Deployment for Enterprise Scalability** RREP-663

We are significantly enhancing deployment flexibility and resilience by introducing full support for OpenShift container orchestration. Raynet One Data Hub images can now be natively deployed within OpenShift environments, enabling organizations to leverage this enterprise-grade platform for superior scalability, security, and container management.

This deployment option fully supports using MariaDB as the primary database backend, offering increased choice and flexibility for customers managing diverse database portfolios.

#### **Extended Technology Catalog & AI Intelligence**

Raynet One Data Hub significantly deepens its asset intelligence with a major update to the Technology Catalog attributes. As software ecosystems become more complex - spanning mobile, cloud, and AI-driven technologies - ITAM managers require granular data to assess risk, ensure compliance, and optimize spend.

This release introduces expanded platform support and new data attributes, providing a multidimensional view of your software portfolio.

- **AI Capability Detection**

Proactively manage "Shadow AI" and compliance with emerging regulations. The catalog now identifies software containing AI components (such as LLMs) and classifies their integration level- distinguishing between software where AI is a Core Feature versus a Helper/Add-on. RREP-747

- **Expanded Platform Coverage**

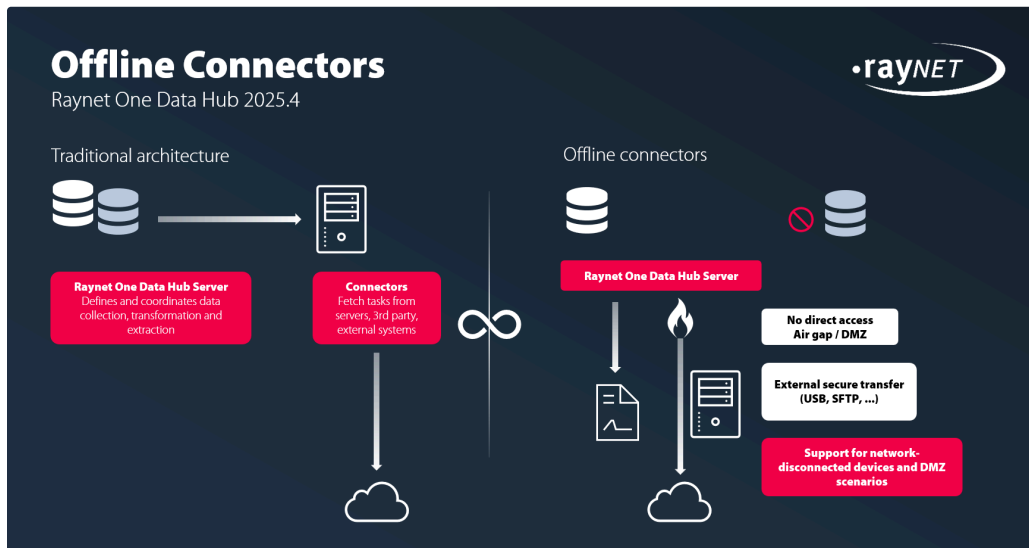
We have broadened our recognition capabilities to include non-traditional and cloud-native environments. Support now extends to Android, iPhone/iOS, ChromeOS, IaaS, and Embedded platforms, ensuring total visibility across your mobile and cloud estate. RREP-752

- **Granular License Intelligence**

- A new dedicated boolean column clearly flags software as Open Source, separating this attribute from the general license model for easier risk and compliance filtering. RREP-751

- The Commercial License property now supports "Freemium" and "Subscription" classifications, reflecting modern SaaS monetization strategies. RREP-750
- Users can now consume and display Custom License string properties directly from the catalog for unique licensing scenarios. RREP-749

## Air-Gapped & Isolated Network Support RREP-639



Raynet One Data Hub extends its reach into your most secure environments with the introduction of Offline Agents. We understand that critical assets often reside in Demilitarized Zones (DMZs), air-gapped networks, or high-security silos where direct server-agent communication is strictly prohibited or technically impossible.

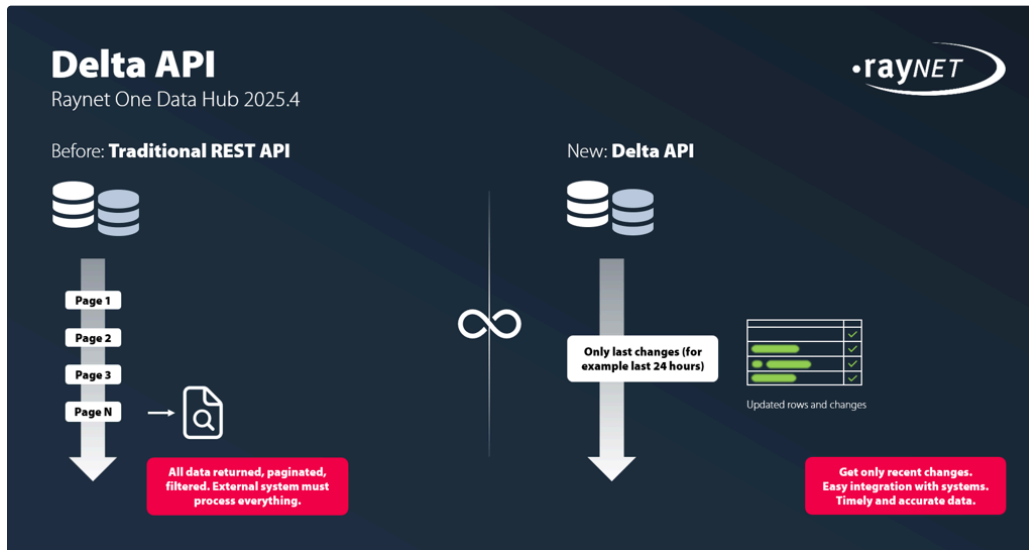
This feature decouples the dependency on a live network connection between the Raynet One Data Hub server and the deployed agents. IT Administrators can now configure agents to operate autonomously, utilizing secure, asynchronous transfer methods - such as SFTP repositories or physical media (USB) - to exchange tasks and inventory results.

This feature has the following benefits for secure networks:

- Elimination of "blind spots" by successfully connecting to cloud, web and assets in high-security or disconnected zones.
- Maintaining of strict firewall rules and network isolation policies while still gathering essential asset data.
- Flexible transport method that aligns with your specific security protocols (e.g., intermediate storage, secure file transfer).
- Data security when moving files across physical boundaries. All data transfer files are protected using 2048-bit encryption, ensuring that sensitive inventory data remains tamper-proof and unreadable during transit, even if a physical storage device is lost or compromised.

We have designed the offline workflow to be as seamless as your standard agent deployment. It requires a minimal set-up, and the orchestration and definition of tasks is performed just as if they were handled by a “connected” agent.

## Delta Change Tracking RREP-729



Raynet One Data Hub introduces powerful Delta Comparison capabilities to the Data Table REST API. We recognize that for efficient ITAM integration, you often need to know what changed rather than retrieving a full data dump every time. This feature enables precise monitoring of data lifecycle events - tracking exactly when records were added, modified, or removed.

By leveraging new API parameters, administrators can now perform differential queries to synchronize external systems faster and create accurate historical audit trails.

This new API adds new capabilities, yet still retaining the original endpoints to get full set of the requested data:

- **Time-Based Filtering**

Retrieve specific datasets based on timing criteria using new parameters such as `createdSince`, `updatedSince`, and `deletedSince`.

- **Deleted Row Tracking**

A dedicated endpoint allows you to fetch rows that have been removed from a table, ensuring your external CMDBs or reporting tools can accurately reflect asset disposal or retirement.

- **Enhanced Metadata**

When enabled, result tables include new metadata columns (for example row's checksum) to provide granular visibility into the state of every record.

To utilize these new API endpoints, the feature must first be enabled globally for the tenant, and the number of persisted snapshots must be set to be at least 1. Once enabled, future task

executions will automatically generate the necessary metadata required to track added, changed and deleted rows and history.

**Programmatic AI-based Data Fetching** RREP-760

API users now have access to a new REST API `/v1/ResultDatabase/fetchViaAi`, which is accessed via a POST method requiring API Key authentication. This endpoint is specialized for fetching pure JSON data and corresponding natural language text, making it ideal for integration without the overhead of dashboard generation.

For security and control, a new permission checkbox has been added during API Key management, allowing administrators to enable or disable access to this feature on a per-key basis; this is enabled by default for new keys but disabled for existing keys for backward compatibility.

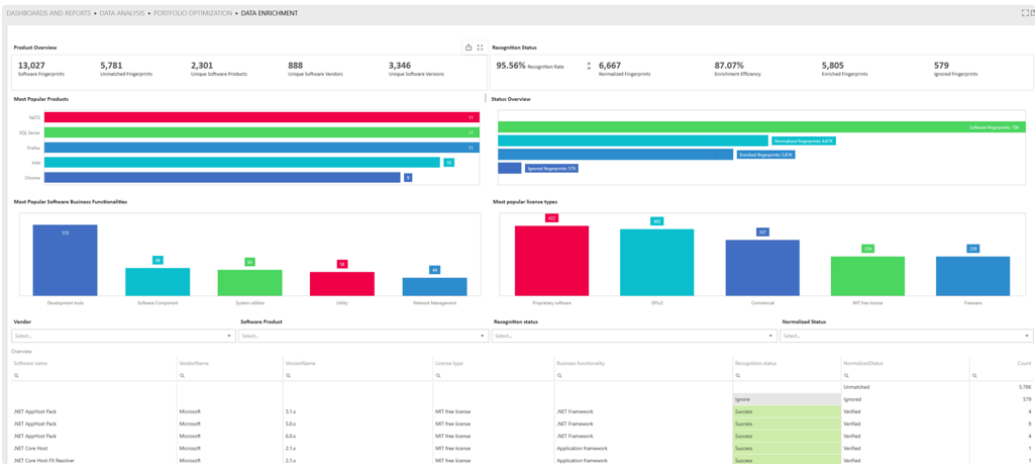
**Citrix Cloud Session Monitoring** RCP-231

Raynet One Data Hub expands its inventory capabilities to virtual desktop infrastructure (VDI) with the new Citrix Cloud Connector. Modern organizations, accurate asset management goes beyond physical hardware to include the virtual workspaces your employees rely on every day.

This feature allows you to seamlessly connect to your Citrix Cloud tenant and import granular session data directly into Data Hub. By centralizing this data, ITAM managers gain critical insights into actual usage patterns, enabling better decision-making regarding license allocation and infrastructure scaling.

The new connectors bridges the gap between physical endpoints and virtual sessions, managing both within a single pane of glass. It allows better understanding of tracked active vs. idle sessions (true consumption behavior), and identification of underutilized Citrix subscriptions or peak usage times to right-size your cloud spending and ensure compliance.

**New Enrichment Dashboard for Portfolio Optimization** RREP-595



Raynet One Data Hub introduces a completely redesigned Data Enrichment Dashboard located under the Portfolio Optimization module. This view provides ITAM managers with an immediate, high-level assessment of their software data quality, transparently showing how raw inventory data ("fingerprints") is being transformed into actionable assets.

This dashboard is designed to answer the critical question: "How much of my software estate is recognized, normalized, and enriched?"

Core four capabilities include:

### 1. **Recognition & Efficiency KPIs**

Instantly monitor your Recognition Rate (e.g., 95%+) and Enrichment Efficiency. New metric cards quantify exactly how many fingerprints are Unmatched, Normalized, or Ignored, giving you a clear target for data quality improvements.

### 2. **License & Functionality Breakdown**

Leverage the new Technology Catalog attributes with dedicated charts for Most Popular License Types (visualizing the split between Proprietary, GPL, MIT, etc.) and Business Functionalities. This allows for quick identification of risk areas (e.g., high volume of unmanaged freeware).

### 3. **Status Funnel**

The Status Overview bar chart provides a visual funnel, tracking the volume of data as it passes through the stages of discovery, normalization, and final enrichment.

### 4. **Granular Investigation Grid**

A detailed Overview table at the bottom allows administrators to drill down into specific line items. You can filter by Vendor or Normalized Status (e.g., Verified vs. Unmatched) to investigate specific gaps in your portfolio.

## **Connector Improvements**

### • **Active Directory**

Extended capabilities to now support the collection of custom, user-defined attributes at the group level for enriched directory data. [RREP-758](#) [RCP-228](#) [ZEN-28470](#) [ZEN-32521](#)

### • **CrowdStrike**

The connector now returns Service Pack version (major) and modified timestamp. [RCP-417](#)

[RREP-754](#) [RCP-422](#)

### • **Microsoft M365**

The connector has been significantly extended with four new data queries: [email\\_activity](#), [onedrive\\_activity](#), [teams\\_device\\_usage](#), and [direct\\_routing\\_calls](#) - to retrieve comprehensive

usage and activity metrics, including license status, device type usage, and detailed call data.

RCP-423 ZEN-37536 RCP-53 RREP-754 RCP-422

- **Nutanix**

Enhanced data retrieval now includes the essential VM-to-Host relationship mapping and the Host serial numbers. RCP-294 ZEN-34656

- **Adobe Admin Cloud**

The products data query has been updated to retrieve a complete set of attributes, including assignedQuantity, code, contractId, customerSegment, delegatedQuantity, and all fulfillableItem and quantity-related fields. RCP-424 ZEN-37536 RREP-754

- **HubSpot Connector**

The connector has been promoted from the "primer" to the "standard" connector category, signifying increased stability and reliability after receiving multiple smaller improvements.

RCP-349 RCP-313

- **JetBrains Hub**

The connector has been promoted from the "primer" to the "standard" connector category, signifying increased stability and reliability after receiving multiple smaller improvements.

RCP-348 RCP-313

- **Intune**

Added new configurable parameters - paging, maxConcurrentRequests and maxRequestsPerSecond to standard connector settings, allowing customers to fine-tune API request performance based on their specific environment and infrastructure needs.

Additionally, resolved issues with HTTP status code 429 Too many requests. RCP-380 ZEN-34708

RCP-413

- **VMware vCenter**

The connector is now always enabled and does not need to be separately licensed. RREP-675

ZEN-37528

- **General Improvements**

Improved stability and performance of many “primer” connectors. RCP-370

## Security Improvements

- Resolved a vulnerability in the v1/Authenticate/request endpoint to ensure the WWW-Authenticate header is always included in the response when a 401 Unauthorized error occurs. RREP-549 ZEN-36036
- Introduced new file type restrictions on various upload endpoints to mitigate vulnerabilities associated with accepting arbitrary and potentially malicious file inputs. RREP-548 ZEN-36036



- Administrator-edited user passwords are now correctly checked and validated against the defined `passwordFormat` regular expression. [RREP-597](#)

## Other Improvements

- Added an ability to switch from standard OpenAI to enterprise-compliant endpoints, such as Azure OpenAI or Azure Foundry, by configuring a custom URL in the application settings. [RREP-791](#)
- Enhanced the Connectors page user experience by ensuring the search button and action bar remain active and accessible while scrolling the list. [RREP-507](#)
- It is now possible to navigate to sub-reports when accessing reports configured through Secure Mode Shared Reports, improving data drill-down functionality. [RREP-646](#)
- User Data Transformation now prioritizes the AD Mail Address over the User Principal Name (UPN) for identification, and similarly prioritizes the `sn` (surname) attribute for extracting the user's last name before resorting to parsing the display name. [RREP-492](#) [ZEN-35997](#) [ZEN-36012](#) [RCP-261](#)  
[RREP-664](#)
- Improved performance of baseline report queries. [RREP-767](#) [ZEN-37940](#)
- Implemented a search feature within the dependency selection screen to allow users to quickly and efficiently find the desired task, resolving user experience issues associated with large task lists. [RREP-391](#)
- A warning box is now displayed when users attempt an outer join on more than four source tables, providing strategic guidance to remove duplicates or break down the join step to mitigate memory usage and potential performance issues. [RREP-222](#)
- Improved temporary space management ensures the custom temporary storage location is respected for interim files, which is crucial for maintaining performance and avoiding failures when processing large data sets. [RREP-806](#) [ZEN-37516](#)
- Improved the internal Data Table API logic to ensure reliable processing and retrieval of extremely large data sets (e.g., millions of rows). [RREP-660](#)
- Oracle extraction tasks now utilize the RMS connection string by default, rather than the Result DB connection string, streamlining the configuration process. [RREP-816](#)
- Improved backup management logic to ensure existing surplus backup tables are actively deleted when the backup amount is reduced or set to zero. [RREP-651](#) [ZEN-37158](#)

## Resolved Issues

- Resolved a task failure issue in the Active Directory connector by changing the `memberOf` column type from `TEXT` to `LONGTEXT` for MariaDB backends to accommodate users belonging to a large number of groups. [RREP-546](#)

- Resolved several issues with translated texts and localization. [RREP-428](#) [RREP-427](#) [RREP-746](#) [RREP-426](#)  
[RREP-631](#) [RREP-644](#) [RREP-667](#)
- Resolved issues where snapshot tables were being erroneously processed by the ETL engine, preventing unnecessary processing and ensuring data integrity. [RREP-759](#)
- Resolved conversion errors that occurred when searching with a simple string across columns of numeric or date/time types (such as `bigint`, `float`, or `datetime2`), improving search stability and user experience across all column types. [RREP-716](#)
- Resolved issues with missing navigation links in the Installed Software and Software Device Reports. [RREP-616](#)
- Resolved issues with the Jira Connector failing due to the usage of a deprecated API. [RCP-445](#)
- Resolved issues with incorrect values returned by the Raynet One Connector - columns `import_device_id` and `guid`. [RREP-821](#)
- Resolved issues with automated scrolling of data grids after an automatic table update, ensuring the user's current view is maintained post-refresh. [RREP-731](#)
- Fixed incorrect visuals for Acquia and Acquire connectors. [RCP-418](#)
- Resolved issues where validation rules were erroneously ignored when the source was an empty table, and corrected the "Within range" rule to exclude empty target tables from percentage calculations, ensuring validation integrity for zero-entry datasets. [RREP-482](#)
- Resolved issues with table `cmp_software` containing incorrect number of rows. [ZEN-32964](#) [RREP-547](#)
- Resolved an issue where the configured value for "Max rows per bulk amount" was not being correctly applied when using a MariaDB database backend. [RREP-741](#)
- Resolved data duplication issue in the Oracle Java Detection Report by fixing an incorrectly constructed JOIN condition to include device-specific criteria, eliminating of duplicate records and restoring performance. [RREP-737](#)
- Resolved an issue where the backup system does not properly handle result tables produced by tasks that generate multiple tables simultaneously. [RREP-652](#) [ZEN-37156](#)
- Resolved a performance bug where HTTP requests triggered a large number of LDAP queries against Active Directory. This issue affected the overall system performance and sometimes was leading to errors when loading dashboards. [RREP-677](#) [ZEN-36744](#)

## Notes and Breaking Changes

- The Backup Feature is now disabled by default upon installation to optimize initial performance and deployment settings. [RREP-759](#)
- Removed task "Activations over time" as its role was taken over by the main Office 365 task.

[RREP-602](#)